

REMI DINING CHAIR TEAK BASE

BRAND

Vincent Sheppard

MATERIALS

polypropylene rope on an aluminium frame and a solid teak base, untreated

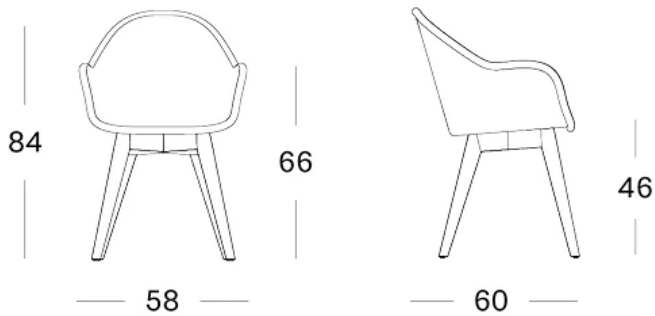
CUSHIONS

removable cover | filling: 2 cm polyester foam | cushion with piping

GLIDES

nylon glides

DIMENSIONS



Price **\$1,395**

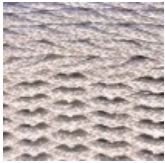
MAINTENANCE

More information <https://cotswoldfurniture.com.au/en/p/o/dining-chairs/remi-dining-chair-teak-base>

MAIN COLOURS



Fossil grey



dune-white-remi

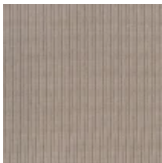
CUSHION COLOURS



Cartenza Off White - Cat. A



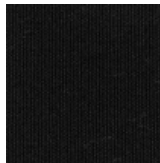
Gracebay Cool White - Cat. A



Wifera Light Grey - Cat. A



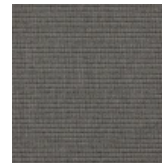
Canvas - Cat. B



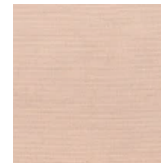
Arashi Black - Cat. B



Panama Fossil - Cat. B



Dark Smoke - Cat. B



Blush - Cat. B



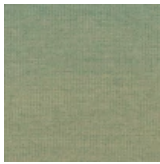
Mineral Blue - Cat. B



Carbon Beige - Cat. B



London Stone - Cat. B



Olive Green - Cat. B



Lin - Cat. B



Almond - Cat. C

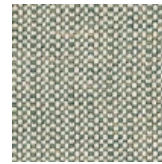
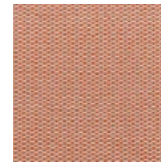


Fig Green - Cat. C



Coral - Cat. C



Savane Zinc - Cat. C

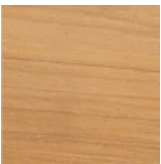


Spice - Cat. C



Savane Coconut - Cat. C

FRAME COLOURS



Untreated
teak

ALL COLOURS SHOWN HERE ARE AS CLOSE TO THE ACTUAL
COLOURS AS THE PRINTING PROCESS ALLOWS. SWATCHES
CAN BE SUPPLIED ON REQUEST.

COTSWOLD FURNITURE