

GIPSY DINING CHAIR

BRAND

Vincent Sheppard

MATERIALS

polyethylene wicker on an aluminium frame and a stainless or galvanized black powder coated steel base

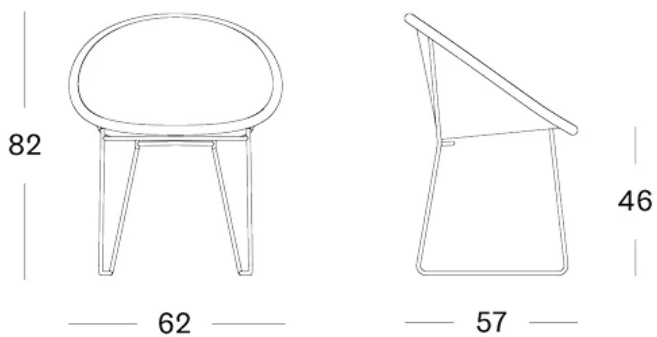
CUSHIONS

removable cover | filling: 2 cm polyester foam | cushion with piping

GLIDES

nylon glides

DIMENSIONS

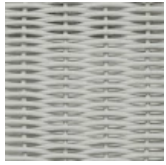


RRP \$815

MAINTENANCE

More information <https://cotswoldfurniture.com.au/en/p/o/dining-chairs/gipsy-dining-chair>

MAIN COLOURS



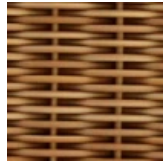
Old lace



Taupe



Black



Honey

CUSHION COLOURS



Canvas -
Cat. B



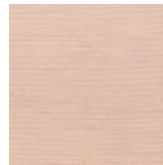
Black - Cat.
B



Panama
Fossil - Cat.
B



Dark Smoke
- Cat. B



Blush - Cat.
B



Mineral Blue
- Cat. B



Carbon
Beige - Cat.
B



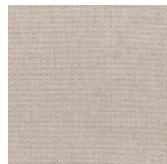
London
Stone - Cat.
B



Olive Green
- Cat. B



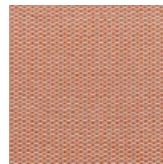
Lin - Cat. B



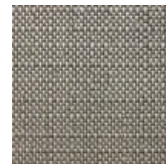
Almond -
Cat. C



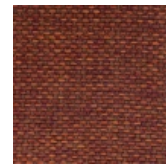
Fig Green -
Cat. C



Coral - Cat.
C



Savane Zinc
- Cat. C



Spice - Cat.
C



Savane
Coconut -
Cat. C

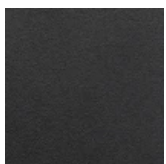


Gypsum -
Cat C



Fawn - Cat.
B

FRAME COLOURS



Black



Stainless

ALL COLOURS SHOWN HERE ARE AS CLOSE TO THE ACTUAL
COLOURS AS THE PRINTING PROCESS ALLOWS.

COTSWOLD FURNITURE